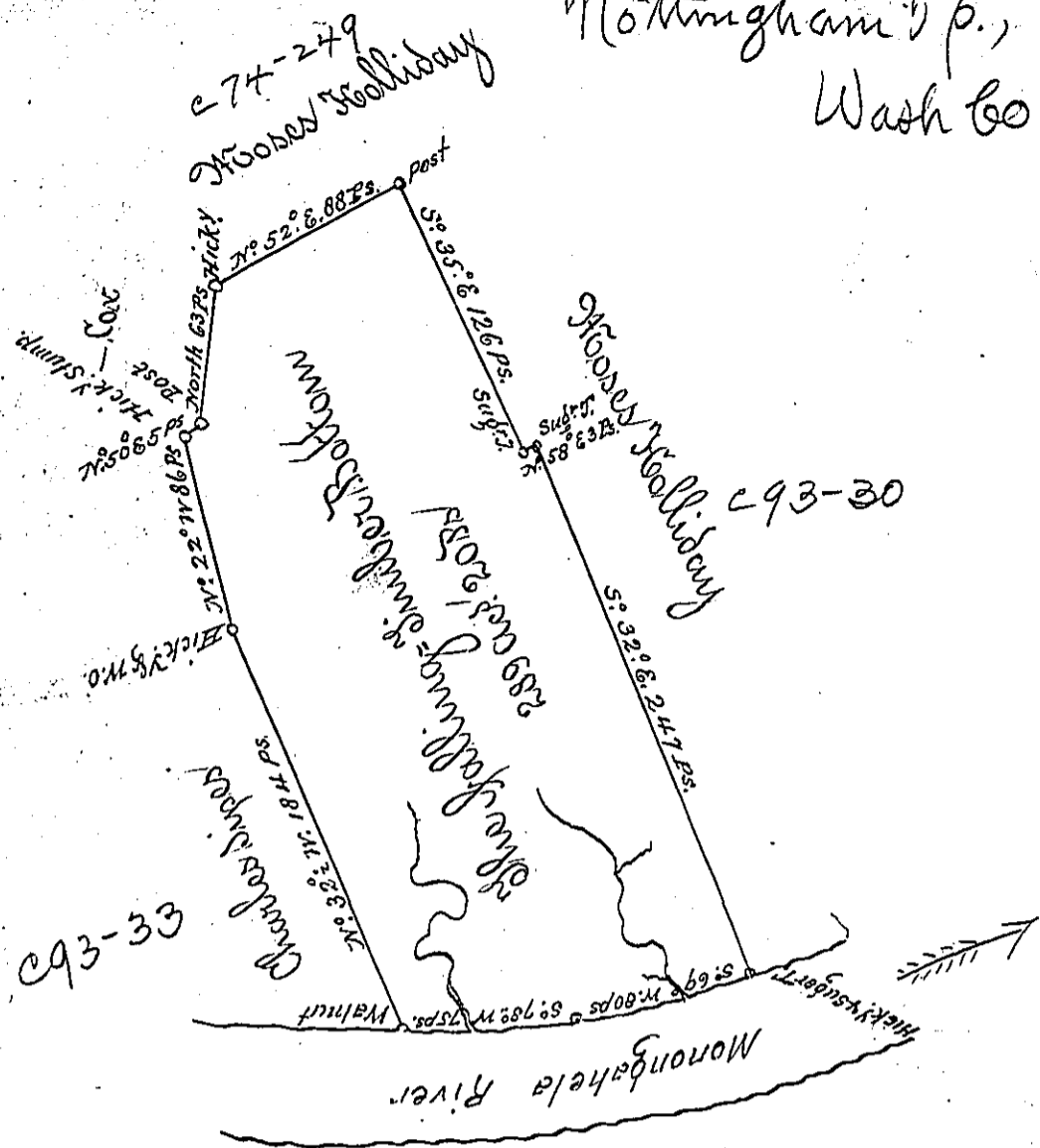


Nottingham Tp.,
Wash Co.

240^x
P20-172
(45)



A Draught of a survey called "The Falling Timber Bottom" situate on the Monongahela River, in Washington County, containing 289 ac. ± 20% and the usual allow. for Highways &c. executed June ye 15 1787 in Pursuance of an Order by Location granted to Jas McDowell Junr for 500 ac. dated ye 23^d of May 1769. 26:5281-

Jno Lukens Esq. S. G. Presley Devill,
Walter Reitchie) D.S.

IN TESTIMONY that the above is a copy of the original remaining on file in the Department of Internal Affairs of Pennsylvania, made conformably to an Act of Assembly approved the 16th day of February, 1833, I have hereunto set my Hand and caused the Seal of said Department to be affixed at Harrisburg, this sixth day of January 1903.

James W. Fatta
Secretary of Internal Affairs.